

32nd Annual  
FACLP  
CONFERENCE

Child Life  
is the  
Bubbles

September  
6-8  
2024



FLORIDA ASSOCIATION OF CHILD LIFE PROFESSIONALS, INC.

# Friday September 6

**5:30 pm - 7:30 pm - Networking Social (Hotel Atrium)**

Join us for an evening networking social event! We will have networking groups for students, leaders, and child life specialists in acute care, hospice/palliative/critical care, outpatient, and community-based settings.

# Saturday September 7



**7:00-8:00am Exhibit Hall & Pop Up Shop Open**  
(breakfast can be brought into the conference center)

**8:00- 8:30am Welcome Address**

**8:30-9:30am Opening Keynote (1 PDU)**

***Committing to Play: Embracing Therapeutic Play as an Essential Component of Child Life Practice***

Well facilitated play can be the most powerful and effective of interventions for many vulnerable patients. A commitment to therapeutic play is essential in daily child life practice.

Christina Brown, MS, CCLS (**Domain III: Intervention**)

**9:45-11:15am Concurrent Session #1 (1.5 PDU)**

***Amplifying the Child Life Impact in Private Practice***

How the scope of Child Life services in Private Practice helps children and families create social, emotional and developmental resiliency alongside adversity. Sara Sefret, CCLS, ITDS **Intermediate - (Domain III: Intervention)**

***Enhancing the Organ Donation Experience: Child Life Specialist's Impact in Organ Procurement Organizations***

Learn how a CCLS assesses the needs of families before, during, and after organ donation while working within an organ procurement organization and other healthcare members. Taylor Hinton, BS, CCLS **Intermediate - (Domain III: Intervention)**

## 11:30-12:30pm Concurrent Session #2 (1 PDU)

### ***There's No 'I' in 'Bereavement': Interdisciplinary Collaboration at End-of-Life in the Children's Hospital Setting***

This presentation addresses challenges, highlights benefits, and shares tools associated with a cohesive and collaborative team approach to supporting bereavement situations in the hospital. *Ellie Smith, MS, CCLS and Tracie Herman, Chaplain BS, CCLS* **Entry - (Domain III: Intervention)**

### ***Lesson in Leading (and Following) in Multi Leader Structures***

Leadership within child life presents unique challenges and strengths. This session explores strategies for teammates and leaders who navigate the expectations of multiple leader structures. *Sharon Breeding, CCLS* **Intermediate - (Domain I: Professional Responsibility)**

## 12:30-1:30pm Lunch and Poster Session (1 PDU)

### ***Program Development for a Community Based Non-Profit Organization Through a Child Life Lens***

This poster outlines the process of designing and implementing theory-based programming for a non-profit community organization serving children whose parents have cancer diagnoses. *Eliana Oro, Emily Zakrzewski and Amanda Williams* **Entry - (Domain 3: Intervention)**



## 1:45-2:45pm Concurrent Session #3 (1 PDU)

### ***Transitioning from Textbooks to Clinical Practice: Applying Theory to Real Life Scenarios***

This session is to provide an opportunity for students and entry level Child Life Specialists to review and discuss three real life scenarios. *Salika Bosler, MSA, CCLS, CIMI and Michelle Ball, MS, CCLS, CIMI* **Entry - (Domain II: Assessment, Domain III: Intervention)**

## ***Integrating the Arts in Pediatric Healthcare***

This presentation will highlight the collaboration between Certified Child Life Specialists and community programming, specifically, culinary medicine and dramatic arts. *Nate Buursman, MS, CCLS, Amanda Ablan, MS, CCLS and Brittany Joseph, MS, RD, CSP, LDN Intermediate - (Domain I: Professional Responsibility, Domain III: Intervention)*

***3:00-4:00pm Concurrent Session #4 (1 PDU)***

## ***Supporting Adolescents Who Have Been Exposed to Violence***

How do we as Certified Child Life Specialists (CCLSs) support adolescents when there are complex systemic issues that are contributing to their violent behavior? This presentation will examine this issue while reviewing a case example. *Jennifer Fieten, MS, CCLS Intermediate - (Domain 1: Ethics)*

## ***S.T.A.R. (Sensory Tactile Auditory Rockstars) Program***

This presentation will take a deep dive into how to individualize care for patients who have developmental and sensory needs and reduce stressors associated with hospitalization. *Kari Kletter, BS CCLS II, Trish Polito, CCLS, and Robin Mack, CCLS Entry - (Domain II: Assessment)*

***4:15-5:15pm Concurrent Session #5 (1 PDU)***



## ***Adapting Child Life Interventions with Emerging Technology***

Demonstrate to child life professionals how to incorporate emerging technology in child life interventions to enhance therapeutic outcomes, individualized interventions, and family-centered care. *Katherine Silva, CCLS Entry - (Domain III: Intervention)*

## ***Child Life in Nonprofit: Applying Your Skills Beyond the Clinical Setting***

The skills and experience developed as a Child Life Specialist can translate well beyond the traditional role. This presentation will shed light on the value of Child Life within nonprofit organizations, and how collaboration can positively impact everyone involved. *Beth Jativa, CCLS, CIMI and Susan Lee, CCLS Intermediate - (Domain I: Professional Responsibility, Domain III: Intervention)*

### ***6:00-7:30pm Social Event (Hotel Conference Center)***

Grab some bubbly and pop on over to the social event for a sparkling fun evening with friends!

# **Sunday** **September 8**

***7:00 - 8:00am Exhibit Hall & Pop up Shop Open***  
(breakfast can be brought into the conference center)

### ***8:00-8:30am FACLP Town Hall***

Join us for raffles, awards, an update from FACLP and an introduction to your new executive board members.

### ***8:30-9:30am Closing Keynote (1 PDU)***

## ***In Pursuit of Progress: Inquiry and the Child Life Professional***

So much more than crunching numbers and writing reports, research IS child life practice. This keynote presentation highlights the every day inquiry process of the child life specialist, delves into the current state of child life research, and outlines an agenda for continued progress that is feasible (and enjoyable!) for all child life stakeholders. *Jessika Boles, PhD, CCLS Entry - (Domain I/Task I: Ethics, Domain I: Professional Responsibility)*

## 9:45-11:15am Session #6 (1.5 PDU)

### ***Bridging Language Discordance: The Power of Play***

Focus on strategies for building rapport and facilitating medical, therapeutic, and non-directive play activities with non-English speaking children *Susan Simonian, PhD, ABPP and Morgan Ford, MS, CCLS Entry - (Domain I/Task I: Ethics, Domain III: Intervention)*

### ***It's Our Honor - Creating a Comprehensive Intervention to Honor Organ Donors***

This presentation will walk participants through improving the walk of honor process and discuss opportunities for child life specialists to increase their participation and resources. *Erin Egan, MS, CCLS and Alyssa Palsis Lendic, MS, CCLS Intermediate (Domain III: Intervention)*

## 11:30am-12:30pm Session #7 (1 PDU)

### ***Growing through Grief: Creating Strategies and Best Practices for Supporting Children and Families during Bereavement***

This presentation challenges learners to look beyond the tradition lens of creating tangible keepsakes and to focus on what is most meaningful to the family. *Christina Boyle-Anderson, CCLS, Nanette Whitehead, CCLS, Kelsey Stephany, CCLS and Elizabeth Webb, CCLS Intermediate - (Domain II: Assessment, Domain III: Intervention)*

### ***Child Life on Standby: Getting Everyone Onboard with Difficult Conversations***



This presentation discusses the provision of difficult information to patients and families and different approaches that child life specialists can take when navigating these situations. *Nicole Boik, MS, CCLS Intermediate (Domain 1/Task 1: Ethics)*

# Additional Information

## *Registration Fees*

### **Early Registration Fees (Before 7/31/2024)**

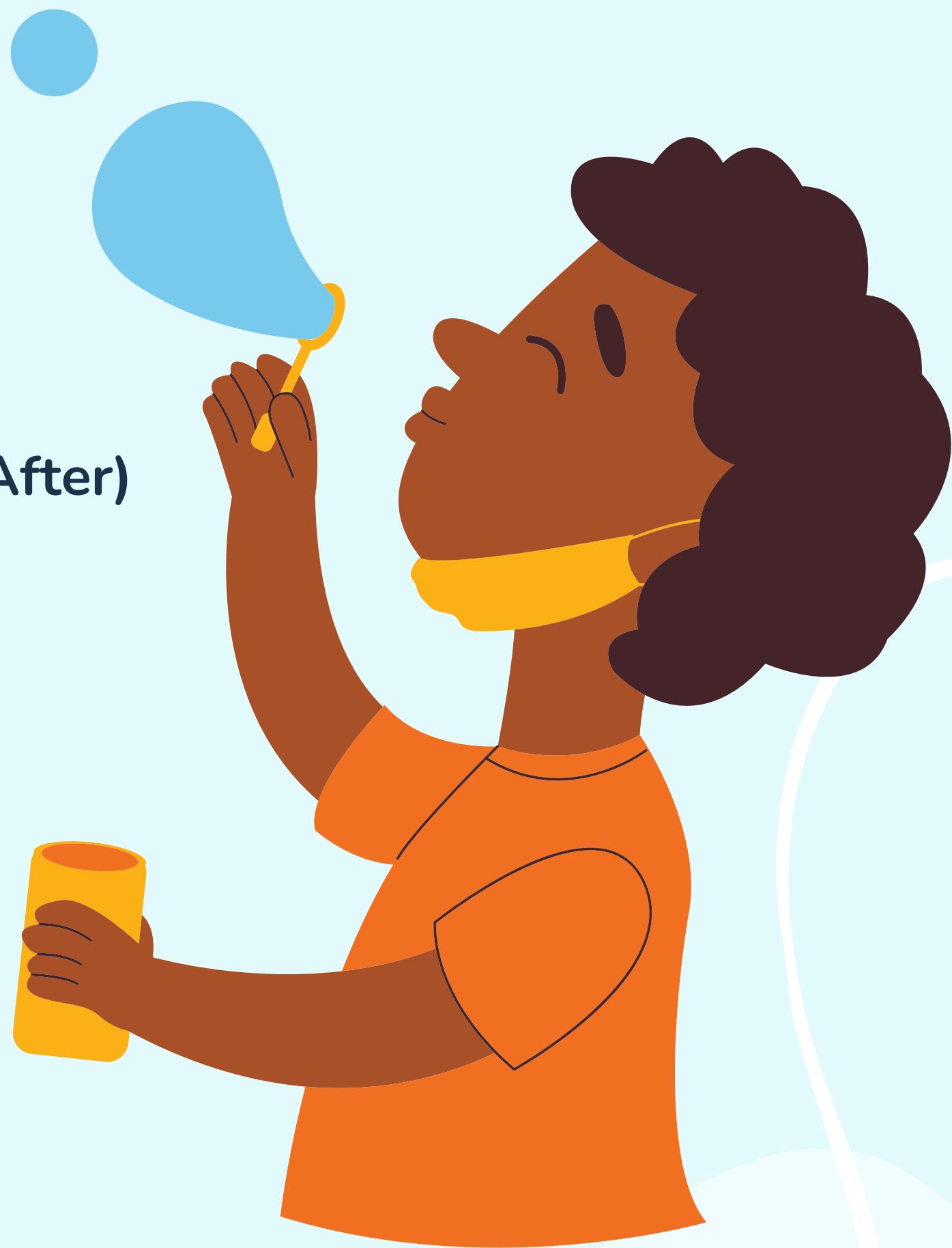
Student Members - \$140  
Student Non-Member - \$170  
Professional Member - \$190  
Professional Non-Member - \$220  
1 Day Saturday - \$150  
1 Day Sunday - \$100

### **Regular Registration Fees (8/1/2024 and After)**

Student Members - \$170  
Student Non-Member - \$200  
Professional Member - \$240  
Professional Non-Member - \$270  
1 Day Saturday - \$190  
1 Day Sunday - \$165

### **Full Admission Pricing Includes**

(7) Breakout Sessions (8 PDUs)  
Opening and Closing Keynotes (2 PDUs)  
Poster Session (1 PDU)  
Several Intervention and Assessment PDUs!  
(2) Hot Breakfasts (mickey mouse waffles, made-to-order omelettes) - Included if Hotel Guest, fee for non-hotel guests  
(1) Hot Lunch Buffet  
Networking Sessions (Leaders, Students, Under and Over 5 years of Experience)  
Friday Networking Social with Drinks and Appetizers  
Saturday Social Reception with Dinner and Drinks  
Exhibit Hall (List TBD)  
Job Posting Board



# *Conference Hotel*

Embassy Suites by Hilton - Orlando International Drive Convention Center  
8978 International Drive

Orlando, FL 32819

Group Rate before August 7th: \$159 One Bedroom King Suite or Double  
Beds Suite

Parking: \$11.50 daily

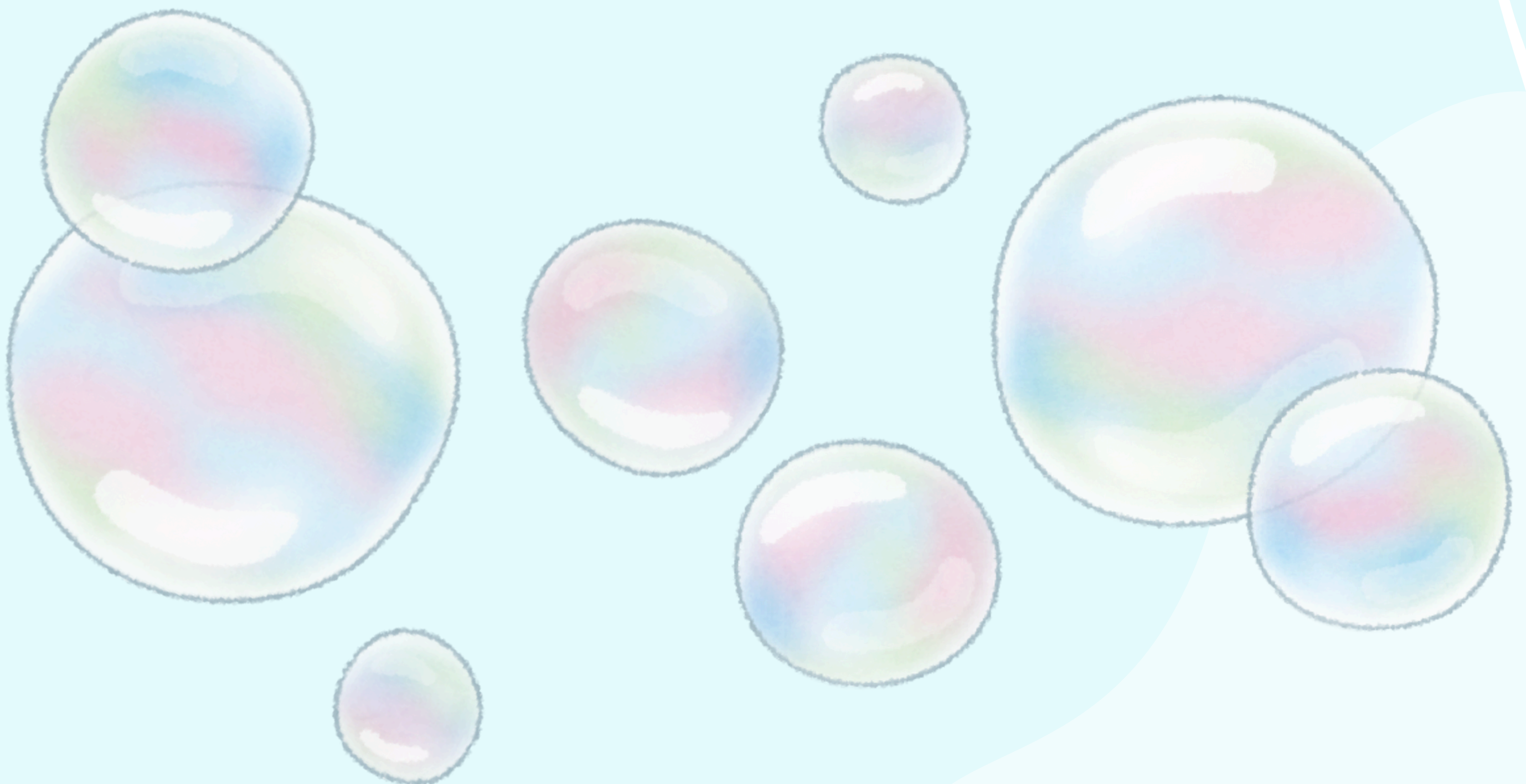
To reserve your room:

<https://www.hilton.com/en/attend-my-event/mcoores-906-ef11420e-136e-42d2-83d6-95676f833b99/>

## *Register Online (Registration Open Now)*

Visit our Instagram @facfp and click the link in our bio to register

Registration Link: <https://web.cvent.com/event/b0c8c467-00fd-4f6a-b7dc-8df3819c0950/summary>





# Executive Board Members

## **President**

Jenna Read, MS, CCLS (Nemours Children's Hospital)

## **President-Elect**

Allison Rein, BA, CCLS (Arnold Palmer Hospital for Children)

## **Past-President**

Carly Lvovsky, MS, CCLS (Joe DiMaggio Children's Hospital)

## **Secretary**

Sarah Musielak, BS, CCLS (Joe DiMaggio Children's Hospital)

## **Treasurer**

Susan Lee, MEd, CCLS (Camp Boggy Creek)

## **Webmaster**

Sarah Mallardi, MS, CCLS (Golisano Children's Hospital)

## **Development Coordinator**

Taylor Hinton, BS, CCLS (Iowa Donor Network)

## **Student Member At Large**

Callista Hind (University of Central Florida)

# Planning Committee

Kimberly Burbage

Leah Frohnerath

Ginell Crespo

Taelor Balkissoon

Erin Egan

Melody Harris

Devon Moris



# Thank You To Our Sponsors

## Diamond Sponsors

Joe DiMaggio Children's Hospital

## Gold Sponsors

Lakeshore Learning  
College of Charleston

## Ruby Sponsors

Make-A-Wish Southern Florida Chapter  
Make-A-Wish Central and Northern Florida Chapter  
Purple Playas Foundation  
Orlando Health  
Golisano Children's Hospital of Southwest Florida  
Camp Boggy Creek

## Session Sponsors

Medi Teddy  
Child Life on Call

## Exhibitor Sponsor

Independent Medical Associates  
Project Sunshine

## Swag Sponsors

Cleveland Clinic  
Fully Loaded Electronics  
Oliver Patch Project  
Sophia's Hope

