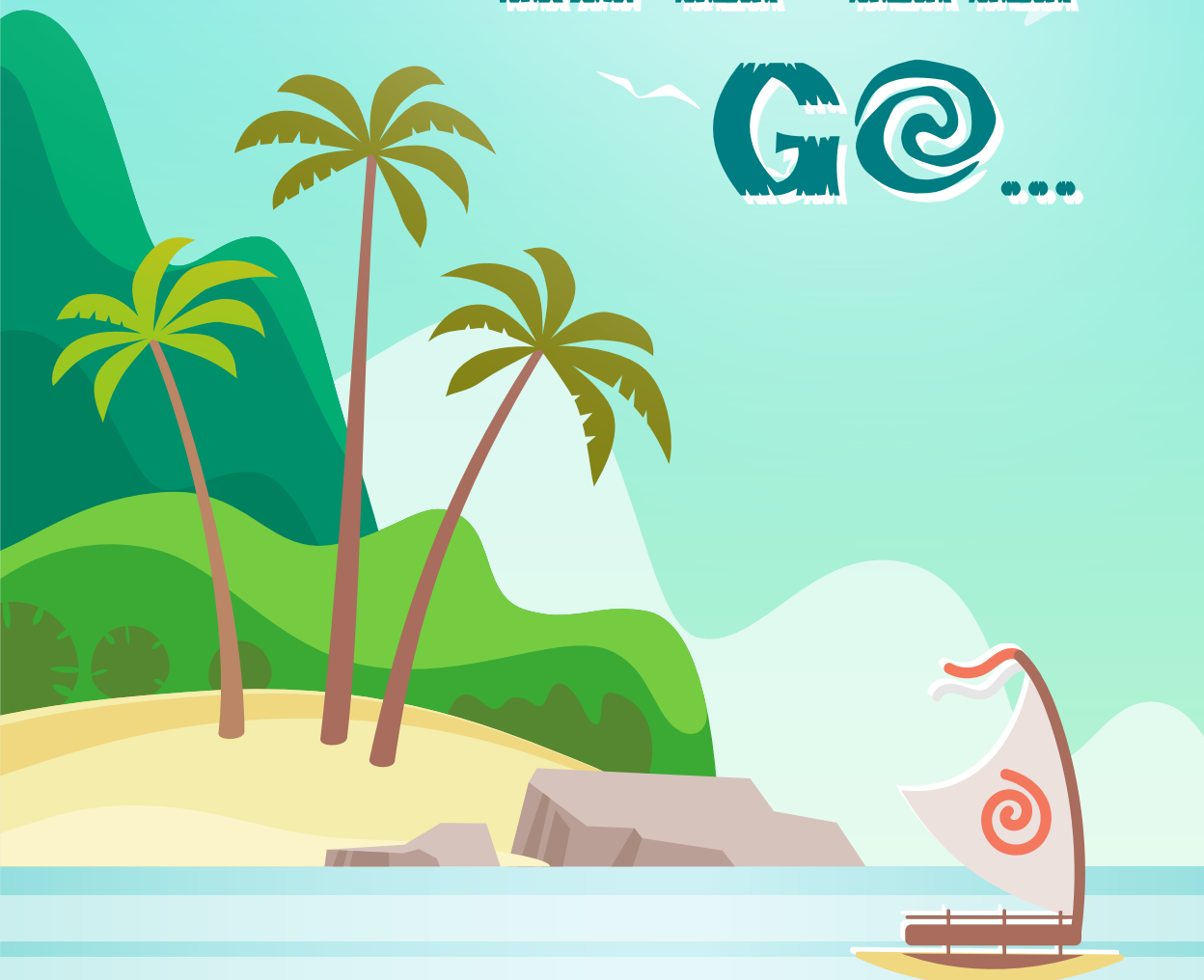


HOW FAR  
WE'LL  
GO...



FACLP

FLORIDA ASSOCIATION OF CHILD LIFE PROFESSIONALS, INC.

29<sup>TH</sup> ANNUAL CONFERENCE

SEPT. 10-12, 2021



# FRIDAY @ SEPT. 10, 2021

**6:00-6:45pm - Conference Kick-off:** Join us for an overview of the conference weekend and enjoy a chance to win a prize during FACLP's version of "Nailed It".

## FOR STUDENTS ONLY:

**7:00-9:00pm - "A Day In the Life" Student Open-House:** Join us for a virtual "Day in the Life of a Child Life Specialist" and hear more about the everyday work of a child life specialist in a variety of settings.

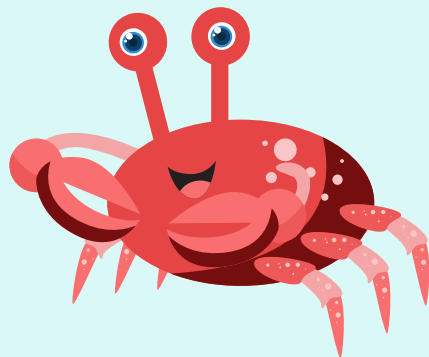
# SATURDAY @ SEPT. 11, 2021

**9:00-9:15am - Welcome**

**9:15-10:45am - Opening Keynote How Far We'll Go – Looking at the Past and Towards the Future to Impact Today:**

How Patient- and Family-Centered Care (PFCC) and Child Life intertwine to effectively serve patients and their families impacting patient safety, quality and perception of care. Katie Lawhead Moyes, MPA, CCLS, Lead Patient and Family Centered Care Coordinator (Augusta University Health System)

**Domain I, III (1.5 PDU)**



**11:00-12:30pm - Session #1 How Far You'll Go – Longevity in the Field of Child Life:**

Are you feeling exhausted, less engaged or like you just aren't making a difference anymore? You may be experiencing burnout! Come assess your level of burnout, learn more about what causes it and how you can protect yourself in order to have a long, rewarding career in the field of child life. Kirsten Black, MS, CCLS, CPMT (Holmes Regional Medical Center) and Kari Kletter, CCLS (AdventHealth for Children) Skills Demonstration Workshop, Entry Level, **Domain I (1.5 PDU)**

**Domain I (1.5 PDU)**

**12:30-1:30pm - Break**

**1:30-3:00pm - Session #2 Child Life Disaster Relief:** Explore how Child Life Disaster Relief supports children and families in crisis and disaster. Cara Smith, MA, CCLS (Child Life Disaster Relief) Skills Demonstration Workshop, Entry Level, **Domain I (1.5 PDU)**

**3:15-4:45pm - Session #3 Diamonds in the Rough – Polishing Your**

**Assessment Skills:** Learn a systematic and systemic approach to assessment to help you dig deeper, uncover more facets of the story, and adapt your intervention plan. Kirsten Black, MS, CCLS, CPMT (Holmes Regional Medical Center), Paige Fennessy, CCLS (VITAS), Melody Harris, CCLS and Nan Whitehead, CCLS (AdventHealth for Children) Panel Discussion, Entry Level, **Domain II (1.5 PDU)**

**5:00-5:15pm - Stretch Break:** Join us for a guided stretch break to rejuvenate your body amidst a long day of learning!

**5:30-6:30pm - Networking Breakouts:** Sign up for the breakout topic of your choice to connect with other child life professionals and students with similar interests and experiences

**7:30-9:00pm - Virtual Game Night:** Unwind and have some fun after a long conference day with a game night.



# SUNDAY @ SEPT. 12, 2021



**8:00-8:45am - FACLP Town Hall:** Join us for raffles, awards, a virtual ACLP update from Kim Stephens, ACLP Past President and final words from our Executive Board.

**8:45-9:45am - Closing Keynote: A Matter of Time: A Father's Perspective:**

Musician and father, Nathan Angelo, shares the story of his daughter Lucy's journey with a rare, life-threatening metabolic disorder that ultimately led to a liver transplant in the Fall of 2016. Out of the ache of adversity and the celebration of the beauty of life, Nathan wrote the album "A Matter of Time" from which he will share a selection of songs while sharing how Child Life impacted their family throughout their medical experiences. **(1 PDU)**

**10:00-11:30am - Session #4 My Brother/Sister Is Sick. Does It Matter How I Feel? – Supporting Siblings to Ensure Well-Rounded, Family-Centered Care:**

This session prepares child life professionals to identify, help prevent, and address pediatric medical traumatic stress among siblings of children with life-changing illnesses or injuries. Melissa Lusk, BS, CCLS and Lauren Linderman, BS, CLS (Ryan's Case for Smiles) Skills Demonstration Workshop, Intermediate Level, **Domain III (1.5 PDU)**

**11:45-12:45pm - Session #5 P.L.A.Y.: Promoting Long-Term Adjustment Year-Round:**

With the COVID-19 pandemic bringing uncertainty, isolation and visitation restrictions, child life specialists were continuously challenged to meet the psychosocial needs of patients. Learn about the creative collaborations between community and multidisciplinary teams that were implemented before and during the pandemic to support patients and families throughout hospitalization. Carly Russo, MS, CCLS, Sarah Buwalda, BS, CCLS and Paige Cos, BS, CCLS (Joe DiMaggio Children's Hospital, Hollywood, FL) Clinical Case Discussion, Entry Level, **Domain III (1 PDU)**

## FOR STUDENTS ONLY:

**1:30-2:30pm - Setting Sail on the Child Life Voyage:** Students will have the opportunity to ask questions from a panel of child life specialists and learn more about coursework, volunteering, practicums, and internships.


## PRE-RECORDED SESSIONS:

**Culture & Grief:** Explore the way culture shapes grief practices and how to integrate culture into our treatment of grief and loss. Shareefah N. Al'Uqdah, Ph. D. Clinical Case Discussion, Entry Level, **Domain I,II (1 PDU)**

**Diary of an Organ Procurement Child Life Specialist:** As child life specialists,

we support children and families at diagnosis, throughout the treatment journey, and at times of decline and active dying. An additional layer to these conversations is the topic of organ donation and procurement. This presentation will discuss the differences between declaration of brain death and cardiac death, these separate pathways to donation, and the experiences of a child life specialist providing support to families through procurement. Jennifer Fieten, MA, CCLS (Gift of Hope) Clinical Case Discussion, Entry Level, **Domain III (1 PDU)**





## Don't forget about us! Advocating for appropriate pain management for infants in the ER:

This presentation aims to show the experience of one child life department's path to advocating for appropriate pain management for neonates during painful procedures in the Emergency Department. Erin Egan, MS, CCLS and Alyssa Palsis, MS, CCLS (Nicklaus Children's Hospital) Clinical Case Discussion, Entry Level **Domain III (1 PDU)**



**Piecing Together Autism, Baker Acts, and Community Inequalities:** This session discusses the link between autism, adolescence, and aggression, as well as the implications of autism on minorities and families of poverty. We discuss the misuse of the Baker Act, and call Child Life Specialists to action on how to support these families within their hospital and community. Jillian Haley, BA, CCLS and Devon Fahrenwald (Lakeland Regional Medical Center) Panel Discussion, Intermediate Level, **Domain II (1.5 PDUs)**

**Red Light, Green Light: Respecting the guardrails, navigating the traffic, and avoiding the potholes of professional boundaries:** This presentation briefly summarizes the current research on therapeutic boundaries and limit setting, providing a framework for reimagining these concepts in the professional environment. The remainder of the time focuses on exercises that help professionals develop self-awareness and determine appropriate interactions. The presentation also describes activities that can be used by providers in supervisory roles to model self-reflection for students and new professionals. Bethany Fisackerly, MS, CCLS (UF Health Shands Children's Hospital) Clinical Case Discussion, Entry Level, **Domain I (1 PDU)**

**Sending Sunshine:** Explore a team's vision, creation and implementation of a committee intended to boost team morale through birthday celebrations, milestone celebrations, special celebrations and more. Hayley Wells, MS, CCLS II and Emily Cordon, CCLS I (Nicklaus Children's Hospital) Clinical Case Discussion, Entry Level, **Domain I (1 PDU)**

**Social Media and Child Life:** This presentation will discuss social media etiquette as well as professional boundaries surrounding social media and child life. Katie Gillen, Sr Social Media Manager (STN Digital) Clinical Case Discussion, Entry Level, **Domain I (1 PDU)**

## **PRE-RECORDED POSTER SESSIONS:** (0.5 PDU for completion of both presentations)

### **The Impact of COVID-19 on the Implementation of Child Life Services:**

**A Survey of Child Life Specialists:** The current research utilized a mixed method, quantitative and qualitative design to examine the impact of the COVID-19 pandemic on the provision of child life services from the perspective of Certified Child Life Specialists (CCLSs) working through this unprecedented time in healthcare. Findings from the study provide important insight regarding the experiences and role changes of CCLSs, and how these positions can be better supported. Nicole DeGeorge, Amelia Brackett, Ally DeVuono, Katie Yochim, Olivia Nassos, Amanda Ablan, Shanel Macom, Hali Palmer, Maryann Riley, Bethany Gallion, Alexis Barker (College of Charleston), Entry Level, **Domain I**

### **Planting the Seeds for the Future Child Life Specialist: The Importance of Including Students in Community-Based Child Life Settings:**

There are few opportunities, but many benefits, to working with a non-traditional CCLS. This poster discusses the benefits of student volunteering in a community-based setting. Sydney Ehinger, BS and Korie Leigh, PhD, MPH, CCLS, CT (The University of Georgia), Entry Level, **Domain I**



# ADDITIONAL INFORMATION

## Registration Fees

**Student FACLP Member** - \$25 per person

**Student Non-FACLP Member** - \$40 per person

**Professional FACLP Member** - \$40 per person

**Professional Non-FACLP Member** - \$60 per person

\*\*\$15 from each registration will go directly to the Dana Burnett Memorial Scholarship Fund

## Registration Includes

- Opening and Closing Keynotes – **(2.5 PDUs)**
- 5 Live Presentation sessions – **(7 PDUs)**
- Access to all recorded presentations for 1 year **(7.5 additional PDUs and counting)**
- Access to Networking Breakout and Virtual Game Night
- Virtual Exhibit Hall
- Job Posting Board
- \*Certificates of Attendance for PDUs will be emailed after all conference evaluations have been received.\*
- \*\*Student Registration includes Student Open House and Q&A sessions\*\*

## Register Online (Registration Open Now)

Visit [www.faclp.org](http://www.faclp.org) and click “Conference” tab then “Conference Registration”



# EXECUTIVE BOARD MEMBERS

## President

**Melody Harris**, BS, CCLS

## President-Elect

**Hayley Wells**, MS, CCLS (*Nicklaus Children's Hospital*)

## Secretary

**Erin Egan**, MS, CCLS (*Nicklaus Children's Hospital*)

## Treasurer

**Tanya Prete**, MA, CCLS

## Webmaster

**Maria Mandese**, MS, CCLS (*Arnold Palmer Hospital for Children*)

## Development Coordinator

**Nicole Boik**, MS, CCLS

## Student Member At Large

**Krizia Lopez**, (*Nova Southeastern University*)

## Past-President

**Kirsten Black**, MS, CCLS, CPMT (*Holmes Regional Medical Center*)



# PLANNING COMMITTEE

**Ashley Bowman**, MS, CCLS

**Grisell Canizales**, MS, CCLS

**Emily Cordon**, BS, CCLS

**Paige Cos**, BS, CCLS

**Regine Duret**, CCLS

**Bethany Fisackerly**, MS, CCLS

**Taylor Hinton**, BS, CCLS

**Gloria Leyva**, MS, CCLS

**Amanda McLeod**, MA, CCLS

**Talia Mor**, BS, CCLS

**Angie Nunez**, MS, CCLS CPMT

**Barbara Nunez**, MS, CCLS

**Alyssa Palsis**, MS, CCLS

**Morgan Perrotti**, MS, CCLS

**Carly Russo**, MS, CCLS

**Chelsie Thomas**, BAA, CCLS

**Danielle Worden**, BA, CCLS

